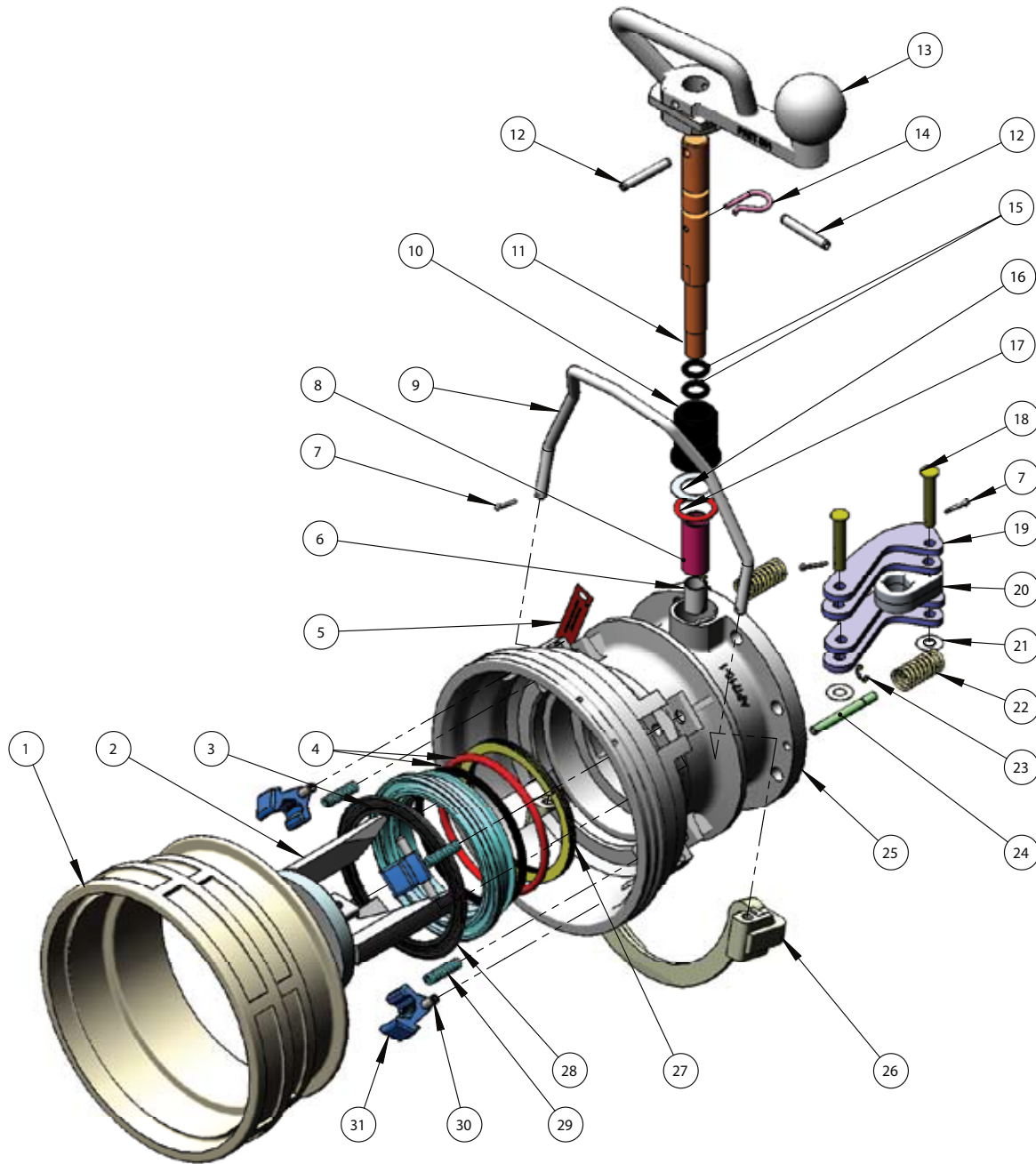


API712 DRY BREAK GANTRY COUPLER



ITEM NO.	PART NUMBER	DESCRIPTION	QTY	MATERIAL
1	API700-3	OUTER BODY (COLLAR)	1	ST STEEL
2	API555-5H	POPPET TO SUIT 4"	1	ALUMINIUM
3	API710-11	POPPET ADAPTOR RING	1	ALUMINIUM
4	0203	O-RING	2	VITON
5	6306	LABEL FOR HANDLE RELEASE	1	ALUMINIUM
6	2698	TETRAPE BEARING TO SUIT	1	TEFLON
7	0762	SPLIT PIN	4	ST STEEL
8	API555-9	SPACER TUBE TO SUIT 4"	1	ST STEEL
9	API555-6	HANDLE - OUTER BODY RING	1	ST STEEL
10	API513-6	BUSH BEARING	1	ACETAL
11	API555-8	OPERATING SHAFT TO SUIT	1	STEEL
12	0926	SPRING PIN	2	STEEL
13	API700-2	HANDLE OPERATING - LONG	1	ALUMINIUM
14	0945	R-CLIP TO SUIT API450 SERIES	1	ST STEEL
15	0235	O-RING	2	VITON
16	5352	SHIM WASHER	1	ST STEEL
17	4574VG	O-RING	1	VITON
18	6736	CLEVIS PIN	2	STEEL
19	API700-15	CAMPLATE FOR API COUPLERS	2	BISPLATE 80
20	API513-7	CAM ECCENTRIC	1	ST STEEL
21	5351	WASHER FLAT THIN	2	ST STEEL
22	4497	SPRING - RETURN	2	SPRING STEEL
23	0093	E-CLIP IMPERIAL	2	ST STEEL
24	API555-7	PIN - SPRING RETURN	2	ST STEEL
25	API710-1	BODY API710 COUPLER	1	ALUMINIUM
26	API555-10	LEVER OUTER BODY	1	ALUMINIUM
27	4449	SPRING SPIRAWAVE	1	SPRING STEEL
28	4602VB	SEAL PRODUCT	1	VITON B70
29	6171	SPRING COMPRESSION	4	ST STEEL
30	0927	SPRING PIN	4	STEEL
31	API725-4	LATCH COLLAR INTERLOCK	4	ST STEEL